

Carbon Reduction Plan

Supplier name: Block Solutions Ltd

Publication date: March 2025

Commitment to achieving Net Zero

Block Solutions is committed to achieving Net Zero emissions by 2050. We have held this commitment from 2021 when we undertook an assessment of our ESG issues and impacts (environmental, social and governance) working with an external expert consultancy Profit with Purpose. It is vital to us as a responsible business and a key supplier to public services within the UK to minimise our impact on society and the environment. Our ESG strategy and Net Zero plans are central to this.

In 2024 we revised our baseline emissions to include a full subset of Scope 3 emissions. These now include Purchased Goods and Services, transportation and distribution and employee commuting. Our revised baseline footprint in 2024 is 918.40 tco₂e, details of which are provided below. To reach Net Zero by 2050 or sooner, we will achieve a 90% reduction in our Scope 1, 2 and relevant scope 3 GHG emissions. We will purchase credible carbon removal offsets to reach a Net Zero balance, via nature based and technological solution.

Achieving Net Zero will require targeted effort and actions in our offices, with our employees and across the supply chain in terms of driving the decarbonisation of purchased capital goods and hardware. As a small office-based organisation our material emission sources are found within the carbon embodied in the products we procure for our clients, from transportation of these products and from the use of the systems we implement. Our carbon footprint boundary excludes the products we purchase and supply; it remains a clear focus for us to consistently demand low carbon component parts and seek the most energy efficient transportation routes.

We will, therefore, work tirelessly upstream and downstream with our supply chain to realise emissions reductions in our processes and operations.

This will include actions across the following key areas across all Scope 3 emissions.

- Ensuring that our technical design and high-level architecture maximises opportunities to leverage the benefits of digitisation to utilise best in class hardware components, networks, and intelligent software
- Ensuring our design leverages technology, including hardware components, software, devices, and hosting services which significantly reduce power and resource consumption
- Working with our suppliers and clients to optimise the use of energy efficient products in the design and delivery of client projects and to design optimum processes for the distribution, delivery and installation of all project components and services.
- Encouraging our employees to choose environmentally efficient commuting and business travel options

Baseline Emissions Footprint

Baseline emissions are a record of the greenhouse gases that have been produced in the past and were produced prior to the introduction of any strategies to reduce emissions. Baseline emissions are the reference point against which emissions reduction can be measured.

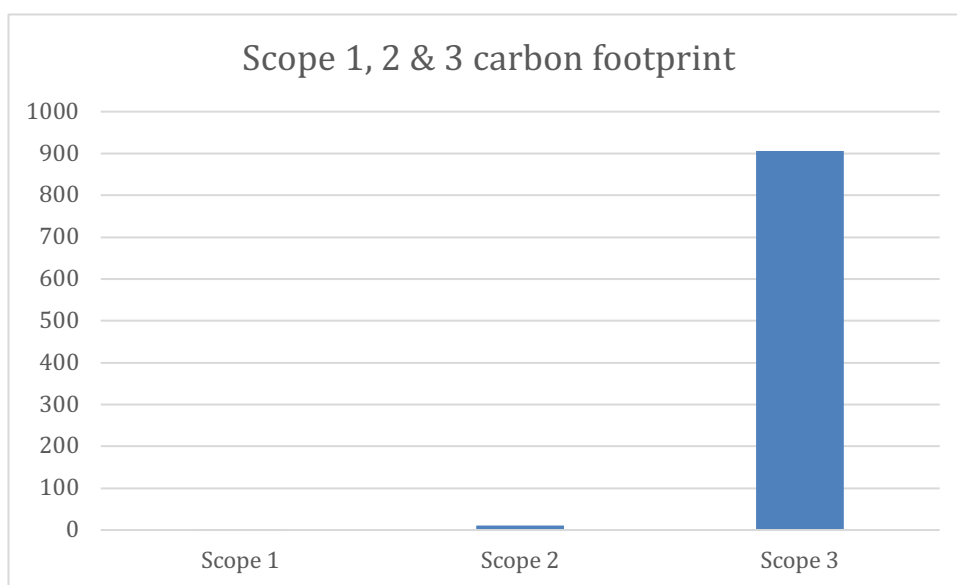
| | |
|---|---------------------------------|
| Baseline Year: 2021 | |
| Additional Details relating to the Baseline Emissions calculations. | |
| <i>Our baseline year emissions relate to office based emissions – in this case electricity only (Scope 2). We have no gas or company owned vehicle emission sources. Scope 3 emissions relate to business travel and employees working from home.</i> | |
| Baseline year emissions: | |
| EMISSIONS | TOTAL (tCO₂e) |
| Scope 1 | 0 |
| Scope 2 | 6.31 |
| Scope 3 (Included Sources) | 65.39 |
| Total Emissions | 71.70 tCO₂e |

Current Emissions Reporting

| | |
|--|---------------------------------|
| Reporting Year: 2024 – REVISED FOOTPRINT TO INCLUDE FULL SCOPE 1,2 &3 | |
| EMISSIONS | TOTAL (tCO₂e) |

| | |
|--------------------------------------|----------------|
| Scope 1 | 0.902 |
| Scope 2 | |
| Market based | 7.044 |
| Location based | 10.854 |
| Scope 3 (Included Sources) | 906.642 |
| Total Emissions | 918.398 |

Footprint Summary - Scope 1, 2 & 3



Scope 1 emissions – fuel use in company own vehicles

Scope 2 emissions – electricity use in our offices

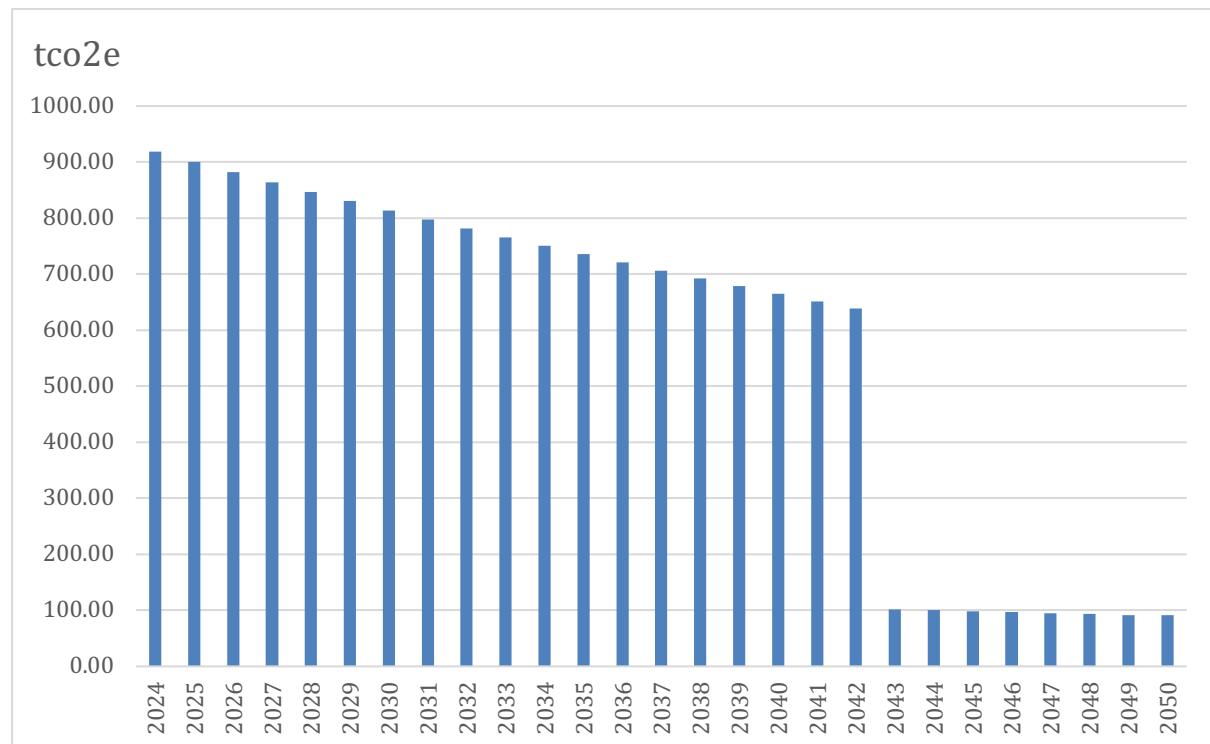
Scope 3 emissions – purchased goods and services, logistics, employee commuting, employee working from home

We now purchased 100% renewable zero carbon electricity from our energy provider in the London office.

Emissions reduction targets

In order to continue our progress to achieving Net Zero, we have adopted the following updated carbon reduction targets.

We project that carbon emissions will decrease on average by 2% each year and following the decarbonisation of the UK national grid we will achieve a 90% reduction in emissions by 2050. We are also conscious that this trajectory may not be linear and will report on emissions efforts and associated reductions on an annual basis.



Carbon Reduction Projects

Completed Carbon Reduction Initiatives

The following environmental management measures and projects have been completed or implemented since the initial 2021 baseline.

During 2021 and 2023 we achieved an 7.2% reduction in emissions. In 2024, our carbon footprint expanded to include a full Scope 1,2 & 3 profile. We will report on these going forward.

Since the introduction of our sustainability strategy in 2021, we have:

- Achieved ISO 14001 Environmental Management
- Introduced an electric vehicle salary sacrifice scheme supporting our employees to reduce impact along with our cycle to work scheme

- Developed new products that increase our ability to carry out work remotely rather than on site, reducing the need for our employees to travel to client sites. This is now producing results as our train travel emissions have reduced 22% over the year
- Removed all our disposable cups from the office and provided staff with keep cups
- Donated surplus office furniture to a school local to our Crewe office
- Achieved and renewed Cisco Environmental Specialisation
- <https://www.block.co.uk/block-awarded-cisco-environmental-sustainability-specialisation/> (Cisco is our main supplier)
- Introduced an essential print only policy.

In the future we hope to implement further measures such as:

Utilising our real estate (offices and other premises) and hosting capabilities more efficiently,

- By taking specific measures to increase energy efficiency
- By committing to the procurement of 100% renewable electricity where possible
- By engaging our employees and stakeholders in our wider sustainability strategy

Declaration and Sign Off

This Carbon Reduction Plan has been completed in accordance with PPN 06/21 and associated guidance and reporting standard for Carbon Reduction Plans.

Emissions have been reported and recorded in accordance with the published reporting standard for Carbon Reduction Plans and the GHG Reporting Protocol corporate standard¹ and uses the appropriate Government emission conversion factors for greenhouse gas company reporting².

Scope 1 and Scope 2 emissions have been reported in accordance with SECR requirements, and the required subset of Scope 3 emissions have been reported in accordance with the published reporting standard for Carbon Reduction Plans and the Corporate Value Chain (Scope 3) Standard³.

This Carbon Reduction Plan has been reviewed and signed off by the board of directors (or equivalent management body).

Signed on behalf of the Supplier:

M Chang
CEO

Date: March 2025

¹ <https://ghgprotocol.org/corporate-standard>

² <https://www.gov.uk/government/collections/government-conversion-factors-for-company-reporting>

³ <https://ghgprotocol.org/standards/scope-3-standard>